

# WORLD TILE

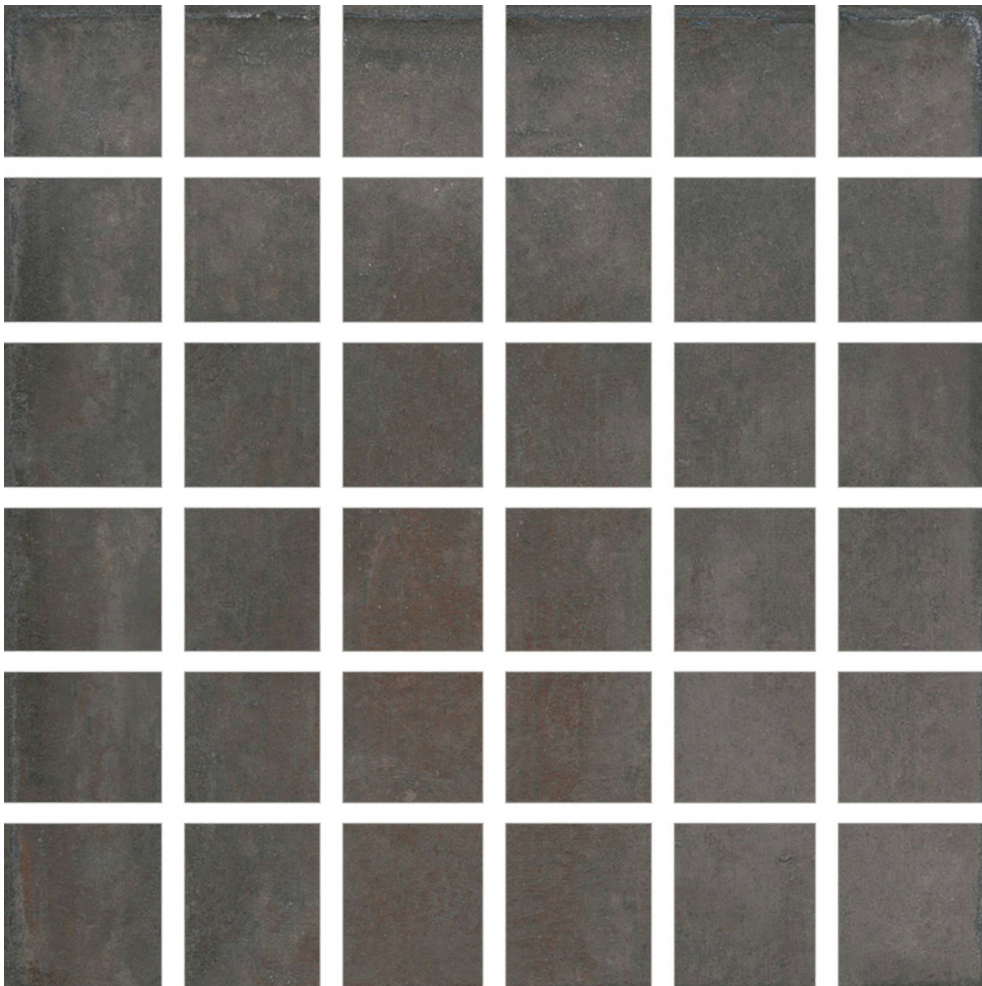
---

## PRODUCT

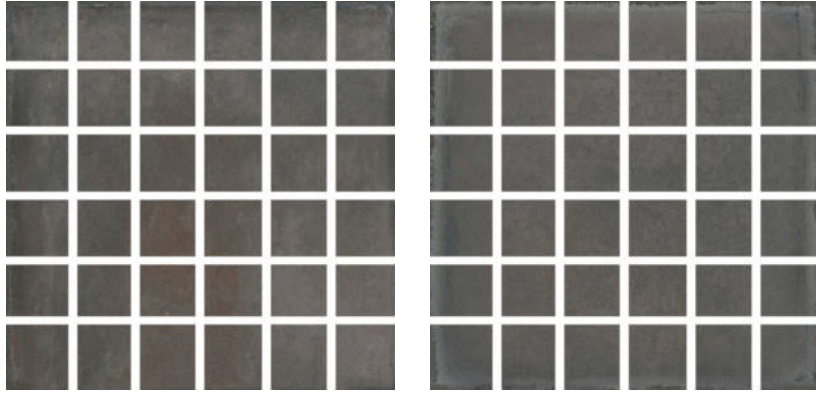
### PALMS STEEL 2X2 MOSAIC

---

Tile | 12"x12" | Glazed Porcelain



## GRAPHIC VARIETY



## TECHNICAL DATA

CODE: QU CR-PA-M  
NAME: Palms Steel 2x2 Mosaic  
SIZE: 12"x12"  
SERIES: Charleston  
FINISH: Matt  
LOOK: Terracotta  
BREAKING STRENGTH (APH): SAFE 1300 N  
CHEMICAL RESISTANCE (APH): Not Affected  
DCOF (APH): >0.89  
FAMILY: Tile  
FROST RESISTANCE: Yes  
MOSAIC CHIP SIZE: 2"x2"  
PEI: 4  
BILLING UNIT: SH  
SHADE VARIATION: V1  
STAIN RESISTANCE (APH): Not Affected  
STYLE: Contemporary  
SUITABLE FOR: Backsplash|Indoor|Shower  
TYPOLOGY: Glazed Porcelain  
THICKNESS (APH): 9.5  
TYPE OF PIECE: Mosaic  
USE: Floor and Wall  
WATER ABSORPTION (APH): <=0.5%

### PACKING

Size	Product type	BOX			PALLET		
		pcs	sqft	lb	boxes	sqft	lb
12"x12"	Mosaic	6					

**WARNING** The information contained in this packing list is for guidance only, the contents of the packing may vary. Please consult our sales representatives for an exact list.