

# WORLD TILE

---

## SERIES CALIFORNIA SLATE

---

Stone Look | | Porcelain

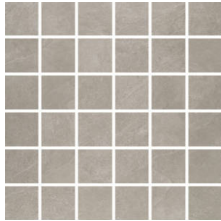


From the Pacific Coast comes CALIFORNIA SLATE, a porcelain tile collection that transforms California's Sun, Sea, Sand into sustainable floor and wall covering.

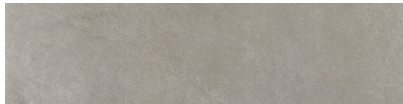
## PRODUCTS



**Avalon Grey 12X24**  
12"x24" | Porcelain



**Avalon Grey 2X2 Mosaic**  
12"x12" | Porcelain



**Avalon Grey 3X12 Bullnose**  
3"x12" | Porcelain



**Carmel Beige 12X24**  
12"x24" | Porcelain



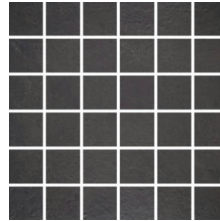
**Carmel Beige 2X2 Mosaic**  
12"x12" | Porcelain



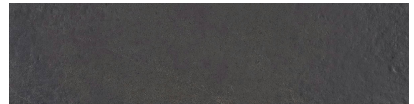
**Carmel Beige 3X12 Bullnose**  
3"x12" | Porcelain



**Monterey Black 12X24**  
12"x24" | Porcelain



**Monterey Black 2X2 Mosaic**  
12"x12" | Porcelain



**Monterey Black 3X12 Bullnose**  
3"x12" | Porcelain

## ROOM SCENES



Size	Product type	BOX			PALLET		
		pcs	sqft	lb	boxes	sqft	lb
12"x24"	Field Tile	7	13.79		56		
12"x12"	Mosaic	10					
3"x12"	Bullnose	15					

**WARNING** The information contained in this packing list is for guidance only, the contents of the packing may vary. Please consult our sales representatives for an exact list.