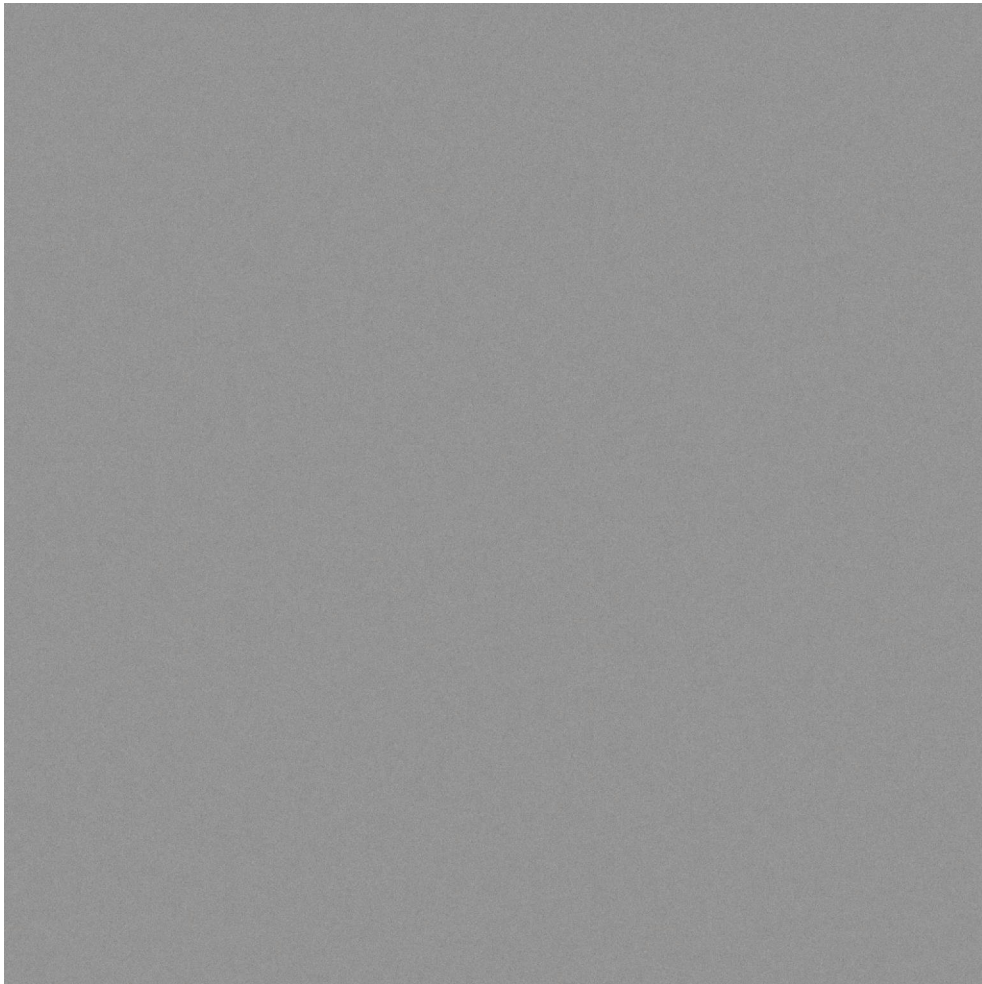


WORLD TILE

PRODUCT
MATTE TORONTO 24X24

Tile | 24"x24" | Porcelain



TECHNICAL DATA

CODE: QUHI-TO-3M
NAME: Matte Toronto 24X24
SIZE: 24"x24"
SERIES: High Rise
FINISH: Matt
LOOK: Mono-Color
EDGE: Rectified
FAMILY: Tile
FROST RESISTANCE: Yes
PEI: 4
BILLING UNIT: SF
SHADE VARIATION: V1
STYLE: Contemporary
SUITABLE FOR: Indoor
TYPOLOGY: Porcelain
TYPE OF PIECE: Field Tile
USE: Floor and Wall

PACKING

Size	Product type	BOX			PALLET		
		pcs	sqft	lb	boxes	sqft	lb
24"x24"	Field Tile	4	15.5				

WARNING The information contained in this packing list is for guidance only, the contents of the packing may vary. Please consult our sales representatives for an exact list.