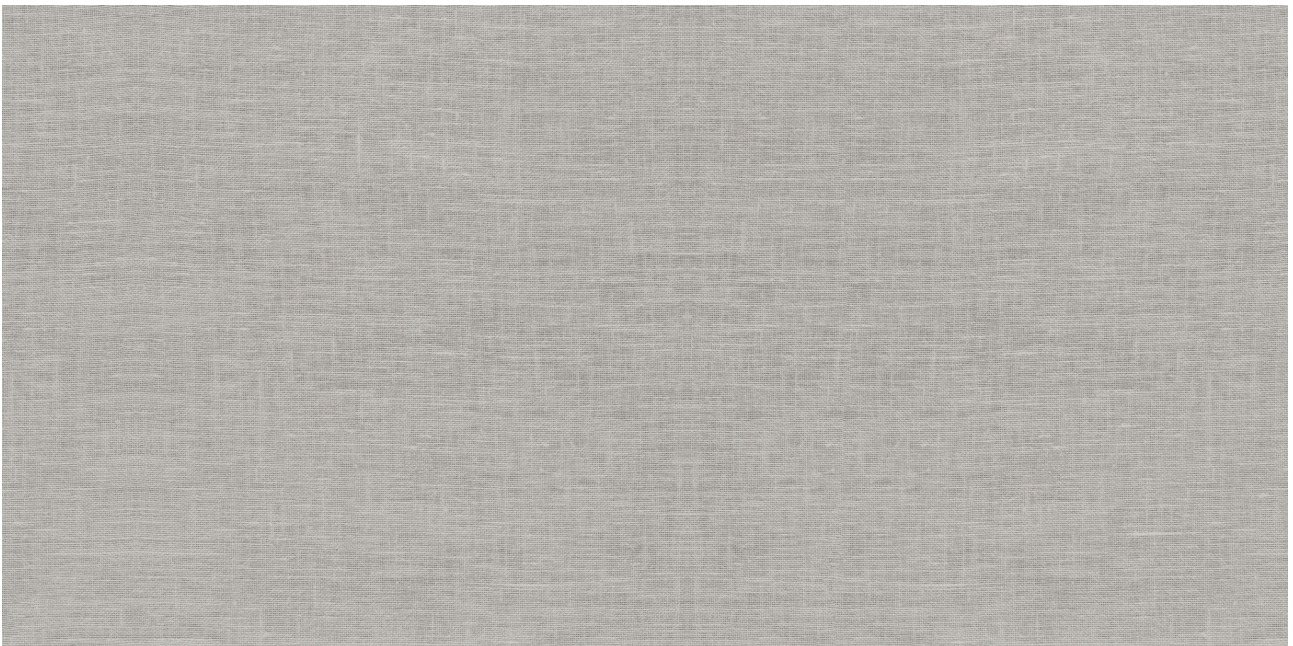




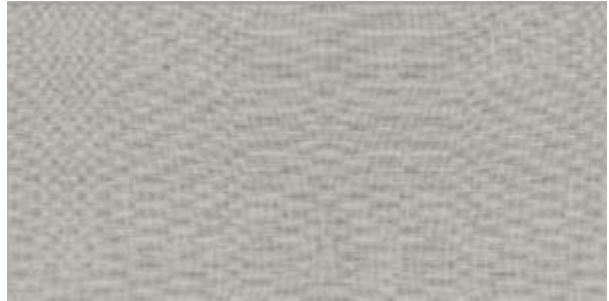
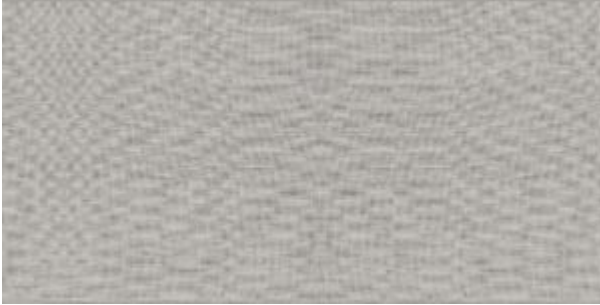
**Mohawk Tile
and Marble**

PRODUCT
FABRIKA 12X24 RECTIFIED CYPRUS SATIN
MATTE

Tile | 12"x24" | Porcelain



DETAILS



ROOM SCENES



TECHNICAL DATA

CODE: QUFA-CY-F1N
NAME: Fabrika 12X24 Rectified Cyprus Satin Matte
SIZE: 12"x24"
SERIES: Fabrika
FINISH: Matt
LOOK: Textured Look
EDGE: Rectified
FAMILY: Tile
FROST RESISTANCE: Yes
SHADE VARIATION: V1
STYLE: Contemporary
SUITABLE FOR: Backsplash| Indoor | Shower
TYPOLOGY: Porcelain
TYPE OF PIECE: Field Tile
USE: Floor and Wall

PACKING

| Size | Product type | BOX | | | PALLET | | |
|---------|--------------|-----|------|----|--------|------|----|
| | | pcs | sqft | lb | boxes | sqft | lb |
| 12"x24" | Field Tile | 8 | 15.5 | | | | |

WARNING The information contained in this packing list is for guidance only, the contents of the packing may vary. Please consult our sales representatives for an exact list.