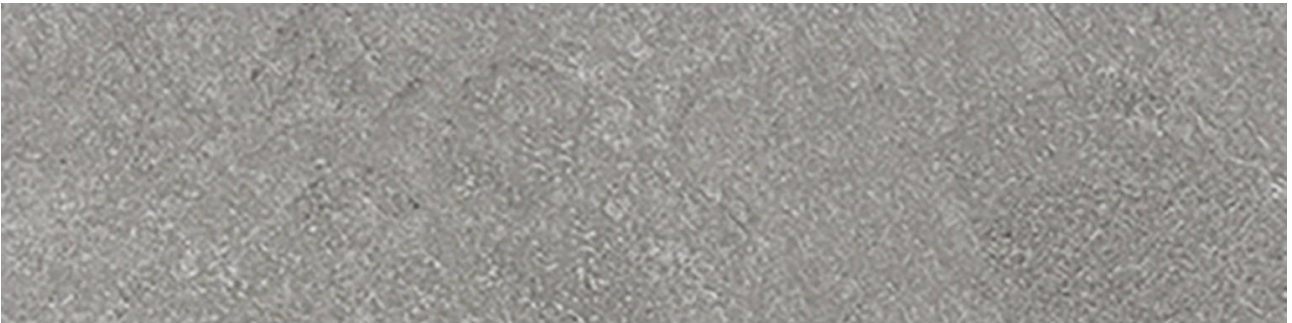




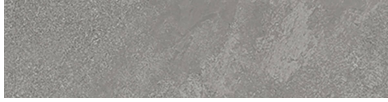
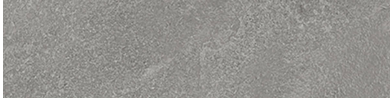
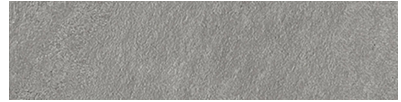
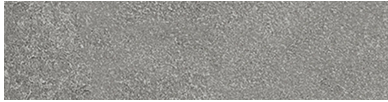
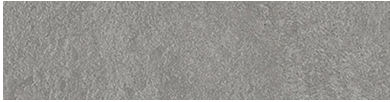
PRODUCT

LINCOLN LIGHT GREY 3X12 BULLNOSE

3"x12" | Porcelain | Tile



GRAPHIC VARIETY



TECHNICAL DATA

CODE: QUME-LI-SB
NAME: Lincoln Light Grey 3x12 Bullnose
SERIES: Metro
SIZE: 3"x12"
FINISH: Matt
LOOK: Slate Stone Look
FROST RESISTANCE: Yes
STYLE: Contemporary
SUITABLE FOR: Indoor
TYPOLOGY: Porcelain
TYPE OF PIECE: Bullnose
USE: Floor and Wall
FAMILY: Tile
RECTIFIED: Yes



PACKING

		BOX			PALLET		
Size	Product type	pcs	sqft	lb	boxes	sqft	lb
3"x12"							

WARNING The information contained in this packing list is for guidance only, the contents of the packing may vary. Please consult our sales representatives for an exact list.