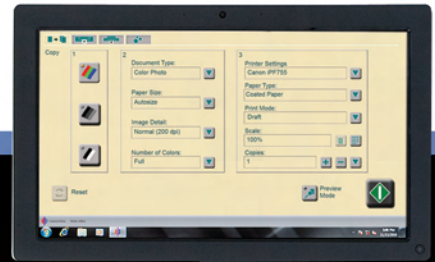


**Canon**

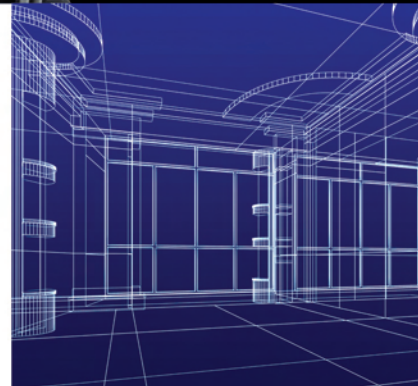
 **imagePROGRAF**  
**iPF765/760 MFP**

imagePROGRAF



**TECHNICAL  
DOCUMENTS**

**MFP LARGE-FORMAT IMAGING**





## 36" imagePROGRAF iPF765/760 MFP Systems

Large-format scan-to-copy/file/e-mail solutions  
for technical document environments.

Designed for AEC, CAD, and GIS technical documents and general use, the 36" imagePROGRAF MFP large-format imaging systems help unlock the full potential of your productivity. These iPF MFP systems have a scanner stand that connects directly to the printer stand to create a one-piece structure. And, you now have options to configure the monitor's position.

### FEATURES

- A complete workflow solution includes large-format scanner, printer, **integrated stand**, computer, and intuitive touch-screen interface.
- The scanner stand connects **directly to the printer stand** to create a one-piece structure.
- **Monitor configuration options** include swing arm, height, and left- or right-side mounting.
- Horizontal **Flat Stacker/Basket** neatly stacks up to twenty 24" x 36" plain paper prints.
- Achieve maximum scan speeds of up to **ten inches per second** for monochrome documents.
- Economy Print Mode allows **for lower cost of operation**.

# imagePROGRAF MFP

## TECHNICAL INNOVATIONS

Built with the user in mind, the imagePROGRAF iPF765/760 MFP Systems include features that make them easy and practical to use.

### HARDWARE DESIGN

The scanner stand is designed to connect directly to the printer stand to create a **one-piece structure** that helps reduce the total footprint of the iPF MFP. The stand gives you the flexibility to use as an "all-in-one" configuration or be set up as an independent scanner stand. There also are options for the monitor position incorporated into the new design. You can choose which side of the stand to place the monitor and whether to use a straight or a swing arm. When using the swing arm, you can choose between two height options. This single-stand design eliminates the need to move the printer and scanner, piece by piece, when setting up or relocating the MFP. The integrated **Flat Stacker/Basket** provides the capability to neatly stack up to twenty 24" x 36" plain paper prints. The basket can be configured as a regular basket, a small stacker, or a larger flat stacker/basket.

### EMBEDDED SECURITY

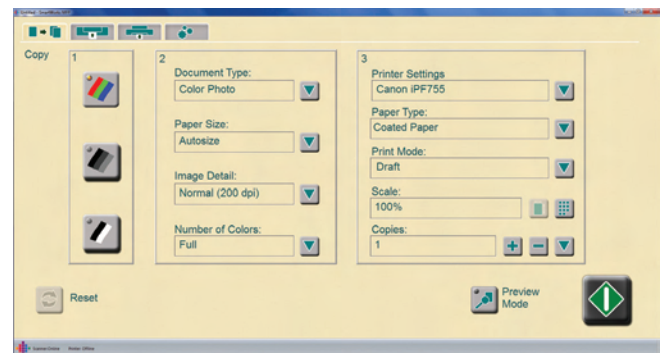
A new **interface lock system** enhances the security functions of the printer. This feature provides an option for administrative control to restrict usage to the printer. The imagePROGRAF iPF765 printer is equipped with a hard drive erase feature that completely erases data sent to the printer from the printer's hard disk. This **highest level of erasure** meets the U.S. Department of Defense requirements (DoD5220.22-M) for erasure of disk media.

### CIS SCANNING TECHNOLOGY

The imagePROGRAF iPF MFP uses CIS technology to capture the finest image detail in technical documents, maps, sketches, hand-annotated drawings, and complex schematics. With true **600-dpi optical resolution**, you can achieve exceptional monochrome performance with very sharp, clean images as well as high-definition color reproduction. And dynamic preview ensures that scans and copies match original hard-copy documents every time.



### INNOVATIVE SOFTWARE



The included SmartWorks MFP software provides users with an easy-to-use interface that requires less interaction between the user and the software. This will reduce the time spent preparing each print and streamline the process as well. The interface includes labels for each button, making printing a file or scanning to copy or file/e-mail as easy as 1-2-3. The large preview screen makes it easier for users to make edits and see dynamic changes on-screen.

### Large preview screen

- Make edits and see dynamic changes on-screen
- Press green button and apply all changes to original scanned file

### Image Editing Capabilities

- Manual Des skew Feature
- Brighten Feature
- Crop Feature
- Zoom In/Out Feature

### HIGH-QUALITY OUTPUT

Print complex schematics with super-clear small text fonts and crisp lines over color backgrounds, even on uncoated technical papers. A super-high-density print-head ejects tiny 4pl droplets of ink that consistently produce **2400 x 1200 dpi output with fine lines within +/- 0.10% accuracy** and as thin as 0.02mm. And Canon's unique 5-color Reactive ink-set delivers durable, smudge-resistant prints with sharp lines and text, bold colors, and smooth fills.

With four lines of imagePROGRAF large-format solutions... whatever your needs, Canon has the answer.

# imagePROGRAF

imagePROGRAF  
iPF765/760 MFP

## SCANNER SPECIFICATIONS

### Scan Speed\*

- 24-bit Full Color @ 200 dpi: 1.67" (per second)
- 8-bit Grayscale and Monochrome @ 200 dpi: 10" (per second)

### Scan Modes

- 16.7-million Color RGB (24-bit)
- 256 color RGB adaptive indexed color palette (8-bit)
- 256-level Grayscale (8-bit)
- Black and White (1-bit)

### Color Space

Normalized RGB

### Resolution

- 2400 dpi (maximum)
- 600 dpi (optical)

### Scan Accuracy\*\*

+/- 0.1% ; +/- 1 pixel

### Maximum Image Width

40 Inches

### Maximum Media Width

41 Inches

### Maximum Scan Length

96 Inches

### Maximum Media Thickness

0.012 Inches (0.3mm)

### Media Feed System

Single large diameter precision ground drive roller; adaptive CIS media focus management and media guide mechanism; intuitive face-up, front-loading, and front-exit media path with side justification; automatic media size detection with reliable optical media sensors

### Digital Imaging Technology

- Contact Image Sensor (CIS) Technology
- 5x close-spaced "deep focus" CIS (25,000 pixels)
- 48-bit RGB digital color image capture
- 16-bit grayscale image capture
- Panchromatic monochrome and black and white
- Bi-directional extra long-life LED light system for optimum object illumination and instant-on scanning capability

### Digital Image Processing

- 2D Intelligent Adaptive Thresholding (IAT) (1-bit mode)
- Fixed Threshold Black and White (1-bit mode)
- Dynamic Normalization Application (DNA) with 16-bit super sampling

### User Status and One-Touch Operation

Center mounted LCD scanner control panel; walk-up operation and user selection of scanner mode with stop, forward, rewind, scan, and copy buttons; local language options, panel overlay, and Magnetic Media Guide

### Included Software

SmartWorks MFP scan-to-file, copy, e-mail with real-time image viewer. Supports TIFF, JPEG, TIFF G4, and PDF.

### Operating System

Windows 7 Professional (64-bit)

### User Maintenance

Installable plug-n-play scanner; simple cleaning

### Scanner Interface Kit

USB 2 Hi-speed

### Operating Environments

10 – 30°C, 35-80% RH, non-condensing

### External Power Supply

100-250 VAC autosensing +/- 10%, 50-60 Hz

### Scanner Power Consumption

- 40Wh (Scanning)
- 4.2Wh (Stand-by)

### Compliances

CB, CE, FCC, UL, RoHS, ENERGY STAR®

### MFP Dimensions

Height: Swing arm high: 63"  
Swing arm low: 56.2"  
Straight arm: 68.2"  
Width: With swing arm extended: 78.5"  
With straight arm: 61.2"  
Depth: Flat stacker: 47.3"  
Regular basket: 38.4"  
Closed: 31.2"

### What's In The Box?

- imagePROGRAF Printer\*\*\*
- Ci C40 Scanner with power cord and USB 2.0 Cable (Scanner to Server)
- 2 Meter USB Cable (Server to Printer)
- Ci C40 MFP Stand
- Ci C40 MFP Stand Assembly Instructions
- SmartWorks MFP Software
- Computer
- Flat Panel Touch-screen Display
- Installation and Operation Manual
- Operator Manual on CD-ROM

\* The scan rate is proportional across the full range of resolutions supported by the scanner. Actual scan times will depend on the host system performance. Quoted top speeds may be limited by the effective bandwidth of the USB 2 and is not guaranteed for all media types.

\*\* The quoted scan accuracy may vary depending on the operating environment and the thickness of the media.

\*\*\* Please refer to [www.usa.canon.com/imageprograf](http://www.usa.canon.com/imageprograf) for specifications for imagePROGRAF printer models.



### Océ North America

Wide Format Printing Systems  
5450 N. Cumberland Ave.  
Chicago, IL 60656

For more information, call us at 800-714-4427, email [us.info@oce.com](mailto:us.info@oce.com), or visit [www.oceusa.com](http://www.oceusa.com).

**Canon**  
image*ANYWARE*

As an ENERGY STAR® Partner, Canon U.S.A., Inc. has determined that this product meets the ENERGY STAR guidelines for energy efficiency. ENERGY STAR and the ENERGY STAR mark are registered U.S. marks. CANON, IMAGEPROGRAF, and the GENUINE logo are registered trademarks of Canon Inc. in the United States and may also be registered trademarks or trademarks in other countries. IMAGEANYWARE is a trademark of Canon. All other referenced product names and marks are trademarks of their respective owners and are hereby acknowledged. Some items may not be available at this time; please check for availability. Specifications and availability subject to change without notice. All printer output images are simulated. MFP shown with iPF765 printer. ©2012 Canon U.S.A., Inc. All rights reserved.

